



**WILLIAM JOHNSTON**  
& COMPANY LIMITED



Glasgow Tel: +44 (0) 141 620 1666 | Inverness Tel: +44 (0) 1463 238 673  
[sales@williamjohnston.co.uk](mailto:sales@williamjohnston.co.uk) | [www.williamjohnston.co.uk](http://www.williamjohnston.co.uk)

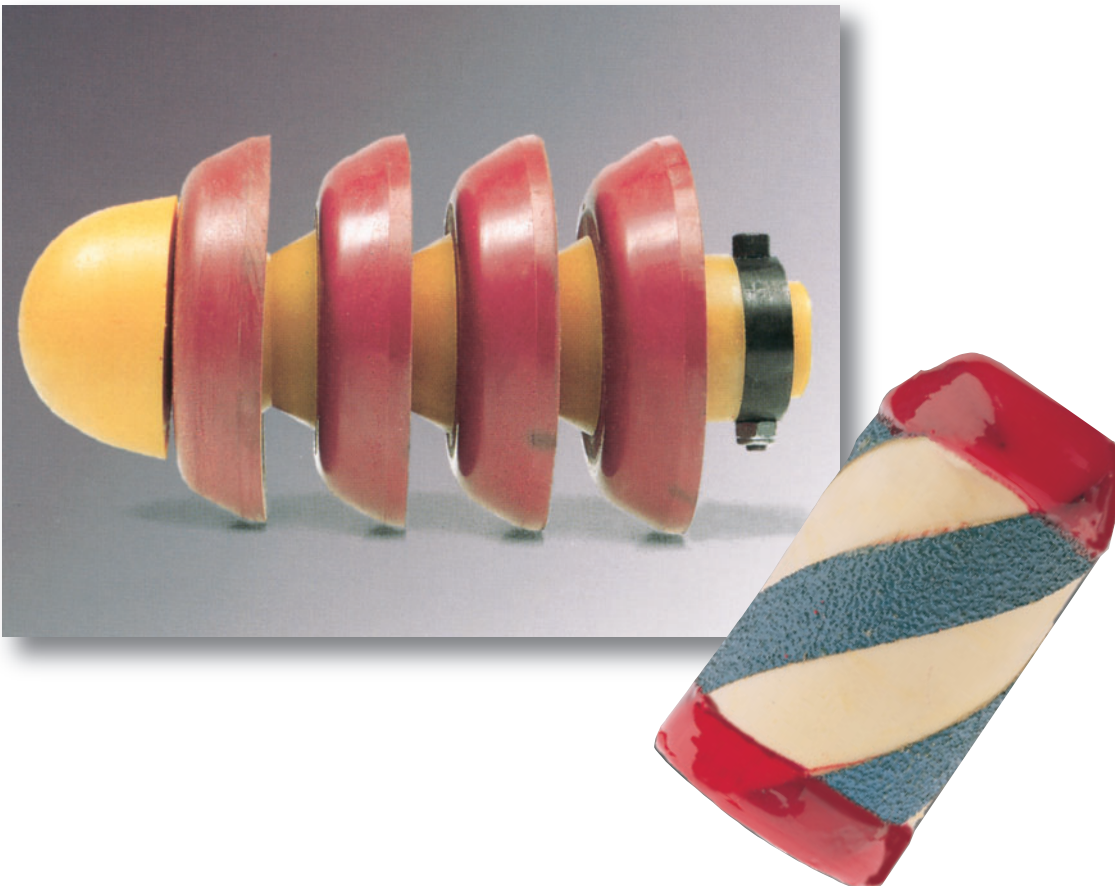
YOUR OFFICIAL UK DISTRIBUTOR FOR LINK-SEAL

## Pipeline Accessories

---



### PSI Pigs





**For drying and dewatering**

PSI foam pigs are ideal tools for pipe drying or dewatering. They are available in sizes between 2" and 48". Larger sizes up to 64" are available on request.

**For filling, scouring and cleaning**

Pigs remove deposits and contaminants from the pipe, which is very important when different media are carried in the same pipeline. Different media can be sent through the pipeline simultaneously.

**For product separation**

All pigs are resistant to oil, gasoline and methanol. Other chemicals according to PSI resistance tables.

Technical changes reserved.



Application range for:	type	material	Ø inch	gravity kg/m³	coating shore A	temp. °C	LG m/s	max. lifetime in km*	Ø reduct max.	min. radius bends	fitting reduction
- drying - slight contamination - elimination of air humidity, - test pig for unknown contamination	PU-FP	PU-foam	50 to 1600	25	-	+5 to +80	1-4	ca. 45	50%	3	yes
- drying - medium contamination for longer distances - dewatering	PU-Plain	PU-foam	50 to 1600	110	-	+5 to +80	1-4	ca. 90	15%	3	-
- cleaning of longer distances with reduction and heavy contamination - hydrostatic test - sealing	PU-Plain-S	PU-foam	50 to 600	80	-	+5 to +80	1-4	ca. 90	20%	3	yes
- cleaning of longer distances with reduction and heavy contamination - hydrostatic test - sealing	PU-LR	PU-foam outer skin abrasion-proof PU	50 to 1600	110	90	+5 to +80	1-4	ca. 90	10%	3	yes
- cleaning of distances with lots of fittings	PU-LR-S	PU-foam outer skin abrasion-proof PU	50 to 600	80	90	+5 to +80	1-4	ca. 90	10%	3	yes
- removing deposit - dehydration - cleaning of long distances - cleaning before initial operating of the pipeline	PU-CC	PU-foam outer skin abrasion-proof PU at periphery PU-strips (rotation effect)	50 to 1600	110	90	+5 to +80	1-4	ca. 90	10%	3	-
- removing deposit - cleaning before initial operation of the pipeline	PU-CC-S	PU-foam core outer skin abrasion-proof PU at periphery PU-strips (rotation effect)	50 to 600	80	90	+5 to +80	1-4	ca. 90	15%	3	yes
- long distance with very heavy contamination - firmly bonded deposit <b>not for plastic pipelines</b>	PU-AC	PU-foam core coil-shaped inserted silicone carbide of corundum strips, bottom and top abrasion-proof PU	50 to 1600	110	90	+5 to +80	1-4	ca. 60	15%	3	yes
- highest cleaning performance - heaviest encrustation - especially heavy rust - long distances - exceptionally firmly bonded deposit <b>not for plastic pipelines</b>	PU-TWB	PU-foam core bottom and top abrasion-proof PU complete with steel brushes (plastic brushes possible)	50 to 1600	110	90	+5 to +80	2-5	ca. 90	5%	5	-

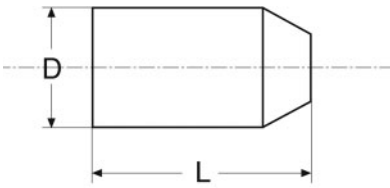
\*The max. lifetimes are empirical values. Tolerances are possible



Application range for:	type	material	Ø inch	gravity kg/m³	coating shore A	temp. °C	LG m/s	max. lifetime in km*	Ø reduct max.	min. radius bends	fitting reduction
- strong encrustation - especially heavy rust - long pipelines - exceptionally firmly bonded deposit use plastic brush for plastic pipes	PU-WB	PU-foam core coil-shaped inserted outer shell made of abrasion-proof PU, coil-shaped inserted wire brushes	50 to 1600	110	90	+5 to +80	2-5	ca. 90	10%	5	-
	Flex S3	big body PU 3 exchangeable PU-collars	50 to 400	-	75	-20 to +80	2-7	ca. 240	15%	3	-
- to separate different liquids - displacement and cleaning pig for pipelines with paraffin or similar deposits - especially for pipelines with inner coating	Flex S4	EPDM	50 to 400	-	45-65	-50 to +150	2-7	ca. 240	15%	3	-
		NBR	50 to 400	-	45-50	-30 to +110	2-7	ca. 240	15%	3	-
- cleaning of pipelines with narrow bends - for hard deposits	Flex C2	CR Neoprene	50 to 400	-	45	-45 to +100	2-7	ca. 240	15%	3	-
		big body PU 2 exchangeable PU-collars + 2 steel wire brushes	50 to 400	-	75	-20 to +80	2-7	ca. 240	10%	3	-
- calibration - location and removal of objects	Flex G2	big body PU 3 exchangeable PU-collars + 3 steel wire brushes	50 to 400	-	75	-20 to +80	2-7	ca. 240	10%	3	-
		big body PU 2 exchangeable PU- collars 1 calibration disc aluminium/steel/mild steel	50 to 400	-	75	-20 to +80	2-5	ca. 240	15%	5	-
	Flex G3	big body PU 1 calibration disc alumi- nium/steel/mild steel	50 to 400	-	75	-20 to +80	2-5	ca. 240	15%	5	-
		EPDM	50 to 400	-	45-65	-50 to +150	2-5	ca. 240	15%	5	-
		NBR	50 to 400	-	45-50	-30 to +110	2-5	ca. 240	15%	5	-
		CR Neoprene	50 to 400	-	45	-45 to +100	2-5	ca. 240	15%	5	-
		FPM Viton	50 to 400	-	50-80	-20 to +200	2-5	ca. 240	15%	5	-

\*The max. lifetimes are empirical values. Tolerances are possible

**PSI Foam Pigs**  
**Type FP**



The nominal diameters ND indicated in the charts correspond to the internal diameter of the pipeline.  
All dimensions are in mm ( $\pm 2\%$ ).  
For ordering use inch dimensions.

**Type FP**

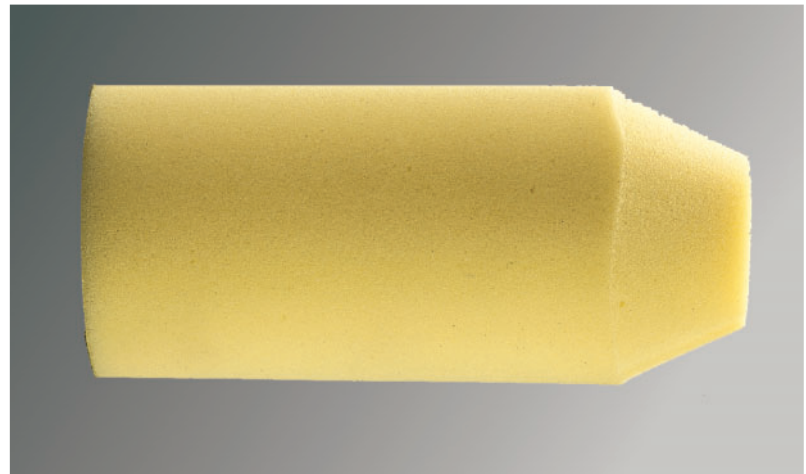
Made of soft, PU flexible foam, reinforced with a polyurethane bottom.

Being highly flexible, FP foam pigs easily pass through short radius bends, valves and elbows.

For drying and mild cleaning.

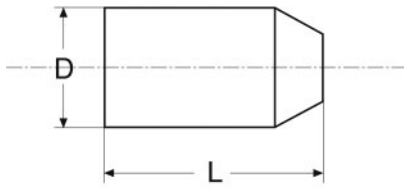
Gravity approx. 14-42 kg/m<sup>3</sup> (0,87-2,60 lbs/ft<sup>3</sup>) Type FP

ND		D	L	min. radius bends type
Inch	mm			
2.0	50	75	150	3
2.5	65	90	200	3
3.0	80	100	220	3
4.0	100	130	250	3
5.0	125	150	275	3
6.0	150	190	300	3
7.0	175	200	320	3
8.0	200	230	360	3
10.0	250	290	430	3
12.0	300	350	560	3
14.0	350	400	600	3
16.0	400	450	700	3
18.0	450	520	750	3
20.0	500	570	800	3
22.0	550	620	850	3
24.0	600	670	900	3
26.0	650	730	1100	3
28.0	700	770	1100	3
30.0	750	820	1150	3
32.0	800	880	1250	3
34.0	850	930	1300	3
36.0	900	980	1350	3
40.0	1000	1080	1540	3
42.0	1050	1120	1680	3
44.0	1100	1190	1680	3
48.0	1200	1300	1800	3
56.0	1400	1500	2240	3
64.0	1600	1700	2520	3





# Types PU-Plain and PU-Plain S



The nominal diameters ND indicated in the charts correspond to the internal diameter of the pipe.  
All dimensions are in mm ( $\pm 2\%$ ).  
For ordering use inch dimensions.

### Type PU-Plain

Made of high-density polyurethane foam, reinforced with a water-tight polyurethane bottom.

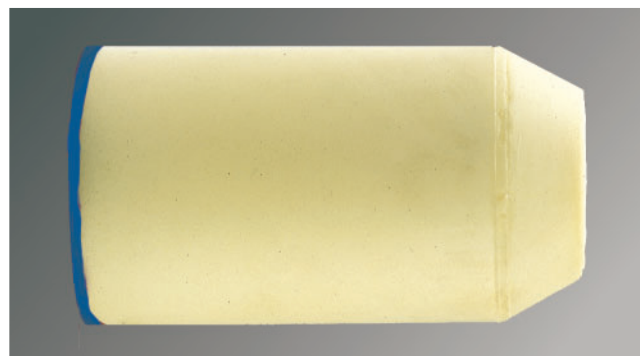
For mild cleaning or drying of long runs after dewatering. Gravity approx. 128-160 kg/m<sup>3</sup> (8-10 lb/ft<sup>3</sup>). These types easily pass through short radius bends (1,5 D). Also available with sealed head (standard  $\geq 16"$ ).

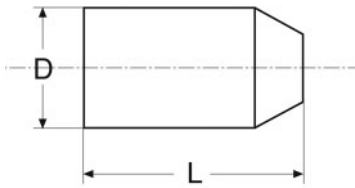
ND		D	L	min. radius bends type
Inch	mm			
2.0	50	60	155	3
2.5	65	75	155	3
3.0	80	85	155	3
4.0	100	110	195	3
5.0	125	135	220	3
6.0	150	168	266	3
7.0	175	177	280	3
8.0	200	215	330	3
10.0	250	270	415	3
12.0	300	321	510	3
14.0	350	348	530	3
16.0	400	410	595	3
18.0	450	455	660	3
20.0	500	505	760	3
22.0	550	555	810	3
24.0	600	605	880	3
26.0	650	665	990	3
28.0	700	710	945	3
30.0	750	760	1130	3
32.0	800	810	1170	3
34.0	865	855	1340	3
36.0	900	910	1370	3
40.0	1000	1010	1470	3
42.0	1050	1060	1580	3
48.0	1200	1220	1760	3



### Type PU-Plain-S

Same as PU-Plain, however softer. Gravity approx. 80-85 kg/m<sup>3</sup> (6,5 lb/ft<sup>3</sup>). Only available up to size 24", also with sealed head (standard  $\geq 16"$ ).





The nominal diameters ND indicated in the charts correspond to the internal diameter of the pipe.  
 All dimensions are in mm ( $\pm 2\%$ ).  
 For ordering use inch dimensions.

### Type PU-LR

Made of high-density polyurethane foam, fully coated with extra abrasion-proof polyurethane rubber (hardness approx. 90° Shore A).

Recommended for cleaning long, straight runs with narrow sections and heavy contamination.

Gravity approx. 128-160 kg/m<sup>3</sup> (9-10 lb/ft<sup>3</sup>).  
 This type easily passes through 1.5 D bends.

ND		D	L	min. radius bends type
Inch	mm			
2.0	50	60	155	3
2.5	65	75	155	3
3.0	80	85	155	3
4.0	100	110	195	3
5.0	125	135	220	3
6.0	150	168	266	3
7.0	175	177	280	3
8.0	200	215	330	3
10.0	250	270	415	3
12.0	300	321	510	3
14.0	350	348	530	3
16.0	400	410	595	3
18.0	450	463	760	3
20.0	500	513	760	3
22.0	550	563	810	3
24.0	600	613	880	3
26.0	650	673	990	3
28.0	700	718	945	3
30.0	750	768	1130	3
32.0	800	818	1170	3
34.0	865	863	1340	3
36.0	900	918	1370	3
40.0	1000	1018	1470	3
42.0	1050	1068	1580	3
48.0	1200	1228	1760	3



### Type PU-LR-S

Same as PU-LR, however with a softer core (hardness approx. 55 Shore).

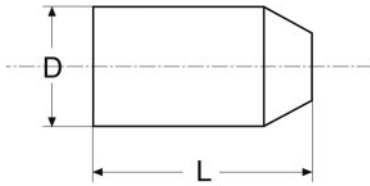
Recommended for cleaning multi-dimensional pipes and pipes with short radius bends. Gravity approx. 80-85 kg/m<sup>3</sup> (6,5 lb/ft<sup>3</sup>).

Only available up to size 24".



## PSI Foam Pigs

# Types PU-CC and PU-CC S



The nominal diameters ND indicated in the charts correspond to the internal diameter of the pipe.  
All dimensions are in mm ( $\pm 2\%$ ).  
For ordering use inch dimensions.

### Type PU-CC

Made of high-density polyurethane foam with a criss-cross coating of extra abrasion-proof polyurethane rubber allowing the pig to rotate and imparting to it high flexibility.

Recommended for efficient removal of deposits and for dewatering, e.g. after hydrostatic tests. This type easily passes through 1,5 D bends. Gravity approx. 110-115 kg/m<sup>3</sup> (9-10 lb/ft<sup>3</sup>).

ND		D	L	min. radius bends type
Inch	mm			
2.0	50	60	155	3
2.5	65	75	155	3
3.0	80	85	155	3
4.0	100	110	195	3
5.0	125	135	220	3
6.0	150	168	266	3
7.0	175	177	280	3
8.0	200	215	330	3
10.0	250	270	415	3
12.0	300	321	510	3
14.0	350	348	530	3
16.0	400	410	595	3
18.0	450	463	760	3
20.0	500	513	760	3
22.0	550	563	810	3
24.0	600	613	880	3
26.0	650	673	990	3
28.0	700	718	945	3
30.0	750	768	1130	3
32.0	800	818	1170	3
34.0	865	863	1340	3
36.0	900	918	1370	3
40.0	1000	1018	1470	3
42.0	1050	1068	1580	3
48.0	1200	1228	1760	3



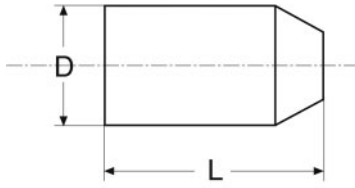
### Type PU-CC-S

Same as PU-CC, however with a softer core.

Gravity approx. 80-85 kg/m<sup>3</sup> (6,5 lb/ft<sup>3</sup>). Only available up to size 24".







The nominal diameters ND indicated in the charts correspond to the internal diameter of the pipe.  
 All dimensions are in mm ( $\pm 2\%$ ).  
 For ordering use inch dimensions.

### Type PU - WB

Made of high-density polyurethane foam with a coating of extra abrasion-proof polyurethane rubber causing the pig to rotate. Steel wire brushes, embedded in the pig, are set at an angle to give maximum scraping power.

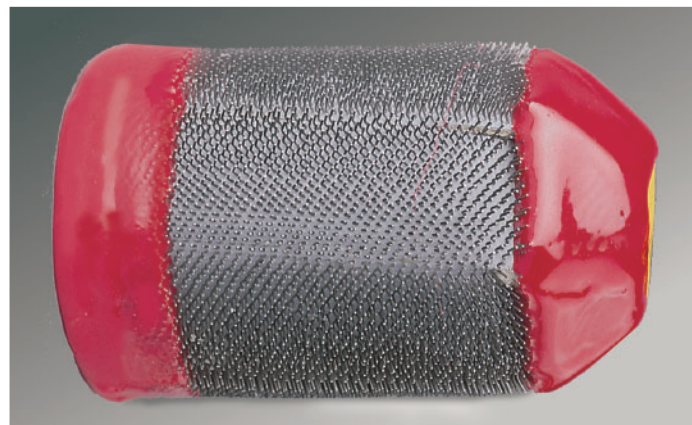
Recommended to remove heavy deposits and rust, also in long runs. This type easily passes through 3 D bends. Gravity approx. 110-115 kg/m<sup>3</sup> (9-10 lb/ft<sup>3</sup>).

ND		D	L	min. radius bends type
Inch	mm			
2.0	50	60	155	3
2.5	65	75	155	3
3.0	80	85	155	3
4.0	100	110	195	3
5.0	125	135	220	3
6.0	150	168	266	3
7.0	175	177	280	3
8.0	200	215	330	3
10.0	250	270	415	3
12.0	300	321	510	3
14.0	350	348	530	3
16.0	400	410	595	3
18.0	450	463	760	3
20.0	500	513	760	3
22.0	550	563	810	3
24.0	600	613	880	3
26.0	650	673	990	3
28.0	700	718	945	3
30.0	750	768	1130	3
32.0	800	818	1170	3
34.0	865	863	1340	3
36.0	900	918	1370	3
40.0	1000	1018	1470	3
42.0	1050	1068	1580	3
48.0	1200	1228	1760	3



### Type PU - TWB

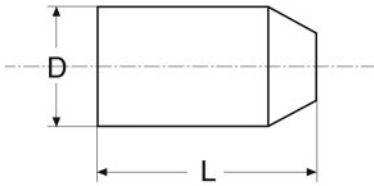
Same as PU-WB, however without polyurethane sections. Instead, entirely coated with wire brush. Gravity approx. 128-160 kg/m<sup>3</sup> (8-10 lb/ft<sup>3</sup>).



Technical changes reserved.

## PSI Foam Pigs

# Type PU-AC and Special Versions



The nominal diameters ND indicated in the charts correspond to the internal diameter of the pipe.  
All dimensions are in mm ( $\pm 2\%$ ).  
For ordering use inch dimensions.

### Type PU-AC (abrasive coated)

Same as PU-CC, however with an additional carborundum coating.

Recommended for removing heavy contaminations, encrusted deposits and corrosion, also in long runs.

This type easily passes through 1.5 D bends.

Gravity approx. 110-115 kg/m<sup>3</sup> (9-10 lb/ft<sup>3</sup>).

ND		D	L	min. radius bends type
Inch	mm			
2.0	50	62	155	3
2.5	65	77	155	3
3.0	80	87	155	3
4.0	100	112	195	3
5.0	125	137	220	3
6.0	150	170	266	3
7.0	175	179	280	3
8.0	200	217	330	3
10.0	250	272	415	3
12.0	300	323	510	3
14.0	350	350	530	3
16.0	400	412	595	3
18.0	450	459	660	3
20.0	500	509	760	3
22.0	550	559	810	3
24.0	600	609	880	3
26.0	650	669	990	3
28.0	700	714	945	3
30.0	750	764	1130	3
32.0	800	814	1170	3
34.0	865	859	1340	3
36.0	900	918	1370	3
40.0	1000	1014	1470	3
42.0	1050	1068	1580	3
48.0	1200	1224	1760	3



## PSI pigs - special versions

### Loops

All foam pigs can be equipped with one or two loops, if required.

Starting with ND 20" one loop is standard.

### Various shapes

If required, all pigs are available with both ends conic or cylindrical.

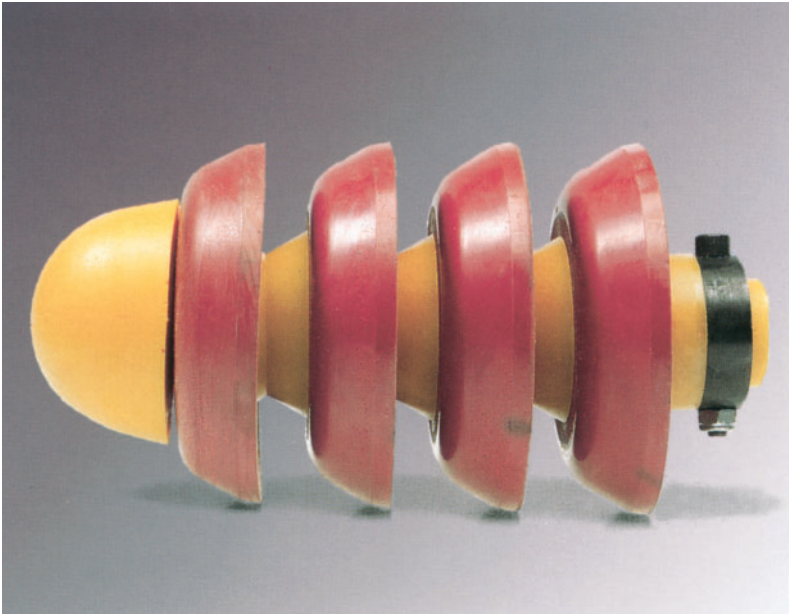
Such pigs are suitable for bi-directional operations.

### Brush-type pig

Consisting of a hard wooden core and nylon brush. For easy cleaning of short pipes.

PSI Polyurethane Flexi-Pigs  
**General Information**

---



**For separation, batching, cleaning, gauging**

PSI flexi-pigs are ideal tools for cleaning, separating, batching and gauging pipelines.

These pigs are equipped with replaceable polyurethane cups and/or circular wire brushes mounted on a flexible polyurethane body up to 24".

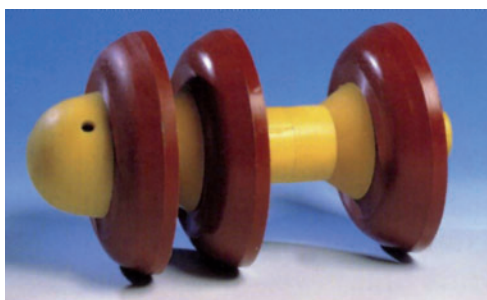
Mounted on a steel body available on request.  
(Available sizes 2" - 56").

Technical changes reserved.

## PSI Polyurethane Flexi-Pigs

# Types Flex-S3 and Flex-S4

### Type Flex-S3



Equipped with 3 replaceable polyurethane cups mounted on a flexible polyurethane body.

This type easily passes through 1.5 D bends. As the pigs are entirely made of polyurethane, they are particularly suitable for internally coated pipelines.

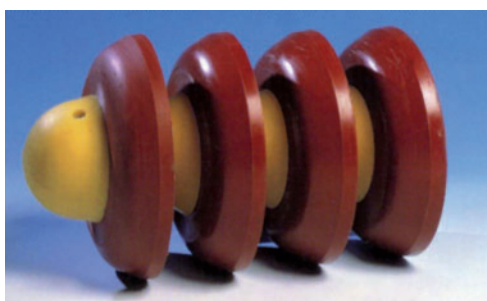
Separation pigs can also be used as batching or cleaning pigs for pipelines with paraffin or similar deposits and for cleaning new pipelines.

For special applications the pigs are available in natural colour polyurethane without addition of colouring substances.

Guide bars are recommended when the branch opening is 75% of the pipe ID.

ND		A		B		Weight kg	min. radius bends type
Inch	mm	Inch	mm	Inch	mm		
2.0	50	5.12	130	3.94	100	0.35	3
3.0	80	7.28	185	4.92	125	0.55	3
4.0	100	8.27	210	6.10	155	0.80	3
6.0	150	12.80	325	8.66	220	3.00	3
8.0	200	15.55	395	11.42	290	5.00	3
10.0	250	19.29	490	14.57	370	9.00	3
12.0	300	21.85	555	17.32	440	13.00	3
14.0	350	24.41	620	19.29	490	20.00	3
16.0	400	27.17	690	22.05	560	26.00	3

### Type Flex-S4



Type Flex-S4 corresponds to type Flex-S3, but it is equipped with 4 replaceable polyurethane cups.

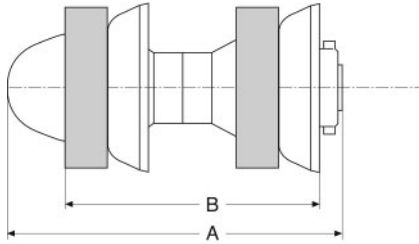
ND		A		B		Weight kg	min. radius bends type
Inch	mm	Inch	mm	Inch	mm		
2.0	50	5.12	130	3.94	100	0.40	3
3.0	80	7.28	185	4.92	125	0.60	3
4.0	100	8.27	210	6.10	155	1.00	3
6.0	150	12.80	325	8.66	220	3.50	3
8.0	200	15.55	395	11.42	290	6.00	3
10.0	250	19.29	490	14.57	370	11.00	3
12.0	300	21.85	555	17.32	440	16.00	3
14.0	350	24.41	620	19.29	490	23.00	3
16.0	400	27.17	690	22.05	560	32.50	3

#### Available spare parts

- driving cup,
- body,
- diabolo spacer set,
- ring spacer,
- socket head screw,
- lock nuts,
- steel locking ring.

Technical changes reserved.

### Type FLEX - C2



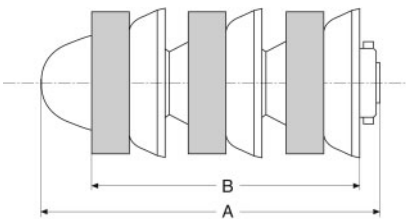
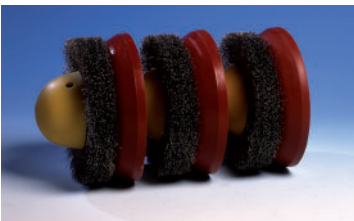
This type is equipped with 2 polyurethane cups and circular steel wire brushes mounted on a flexible polyurethane body. It easily passes through 1.5 D bends.

This type is also available with stainless steel brushes or plastic brushes for internally coated pipelines.

Guide bars are recommended when the branch opening is 75% of the pipe I.D.

ND		A		B		Weight kg	min. radius bends type
Inch	mm	Inch	mm	Inch	mm		
2.0	50	5.12	130	3.94	100	0.60	3
3.0	80	7.28	185	4.92	125	0.90	3
4.0	100	8.27	210	6.10	155	1.10	3
6.0	150	12.80	325	8.66	220	4.00	3
8.0	200	15.55	395	11.42	290	7.00	3
10.0	250	19.29	490	14.57	370	11.00	3
12.0	300	21.85	555	17.32	440	15.00	3
14.0	350	24.41	620	19.29	490	24.00	3
16.0	400	27.17	690	22.05	560	29.00	3

### Type FLEX - C3



Type FLEX-C3 corresponds to type FLEX-C2, but it is equipped with 3 steel wire brushes and 3 polyurethane cups.

ND		A		B		Weight kg	min. radius bends type
Inch	mm	Inch	mm	Inch	mm		
2.0	50	5.12	130	4.13	100	0.90	3
3.0	80	7.28	185	5.91	125	1.00	3
4.0	100	8.27	210	6.50	155	1.50	3
6.0	150	12.80	325	10.24	220	5.50	3
8.0	200	15.55	395	12.21	290	10.00	3
10.0	250	19.29	490	14.57	370	15.00	3
12.0	300	21.85	555	16.34	440	21.00	3
14.0	350	24.41	620	17.72	490	32.00	3
16.0	400	27.17	690	20.47	560	39.00	3

#### Available spare parts

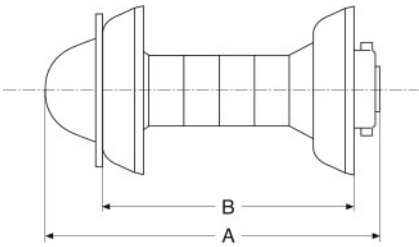
- driving cup,
- body,
- diabolo spacer set,
- ring spacer,
- socket head screw,
- lock nuts,
- steel locking ring,
- steel brush.

Technical changes reserved.



# Types Flex-G2 and Flex-G3

## Type FLEX - G2



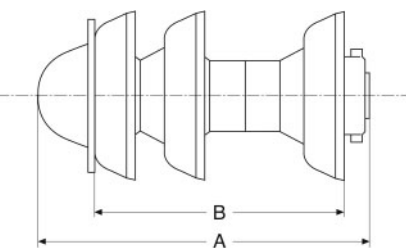
Gauging pigs are used to ensure that there is no excessive weld penetration, and to locate and remove obstructions that might prevent the passage of pigs.

Mounted on a very flexible body, these pigs are available with 2 (FLEX-G2) or 3 (FLEX-G3) replaceable polyurethane cups and an aluminium gauging plate with a diameter of normally 90% or 95% of the pipe I.D. On request, these plates are available in mild steel. When ordering, please specify the gauging plate's diameter.

This type easily passes through 1.5 D bends.

Guide bars are recommended when the branch opening is 75% of the pipe I.D.

## Type FLEX - G3



FLEX-G2 and FLEX-G3							
ND		A		B		Weight kg (G2)	min. radius bends type
Inch	mm	Inch	mm	Inch	mm		
2.0	50	5.12	130	3.94	100	0.40	5
3.0	80	7.28	185	4.92	125	0.60	5
4.0	100	8.27	210	6.10	155	1.08	5
6.0	150	12.80	325	8.66	220	3.00	5
8.0	200	15.55	395	11.42	290	5.00	5
10.0	250	19.29	490	14.57	370	9.00	5
12.0	300	21.85	555	17.32	440	12.00	5
14.0	350	24.41	620	19.29	490	18.00	5
16.0	400	27.17	690	22.05	560	25.00	5

### Available spare parts

- driving cup,
- body,
- diabolo spacer set,
- ring spacer,
- socket head screw,
- lock nuts,
- steel locking ring,
- gauging plate.

Technical changes reserved.

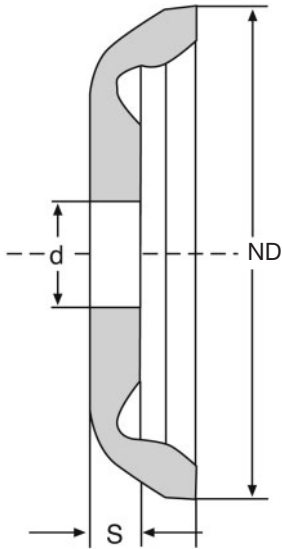
PSI Polyurethane Flexi-Pigs  
**Pig Cups**



These cups' exceptional wear resistance, combined with a unique cup design, ensures a maximum scraping and sealing effect.

The cups are resistant to most products carried in pipelines, e.g. natural gas, crude oil, refined hydrocarbon products, most chemicals, vegetable oils and food products.

For special applications the cups are also available in natural coloured polyurethane without addition of colouring substances.



ND		S		d		Weight kg
Inch	mm	Inch	mm	Inch	mm	
2.0	50	0.32	8	0.41	14	0.02
3.0	80	0.39	10	1.06	20	0.04
4.0	100	0.47	12	1.06	27	0.12
6.0	150	0.79	20	1.91	49	0.32
8.0	200	0.87	22	1.91	49	0.70
10.0	250	0.98	25	2.38	61	1.40
12.0	300	1.10	28	2.38	61	2.30
14.0	350	1.22	31	3.01	76.5	3.20
16.0	400	1.38	35	3.01	76.5	5.00

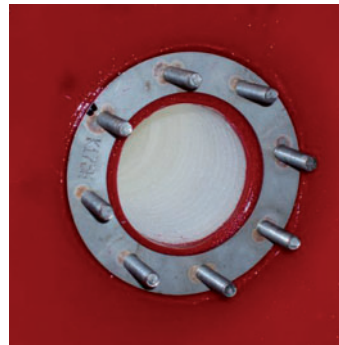
The cup's centre hole can be modified to suit customer requirements.

Technical changes reserved

# PSI Pig Localisation

## General Information

The pig localisation includes the most modern technology. This can be used for all common pigs in the pipeline system. The pig localisation includes a transmitter fixed to a pig and a receiver with an antenna for locating the pig.

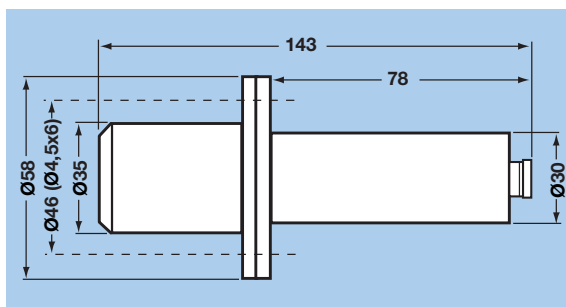


For further information please contact PSI.

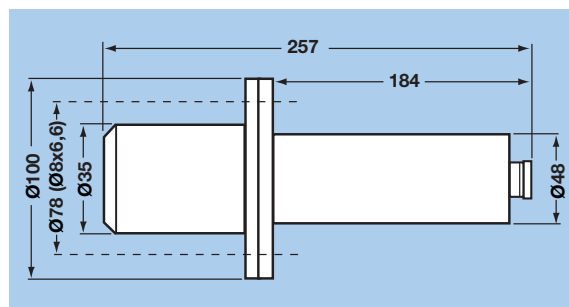
Flange for transmitter on the PU pig

Transmitter on the flexi-pig

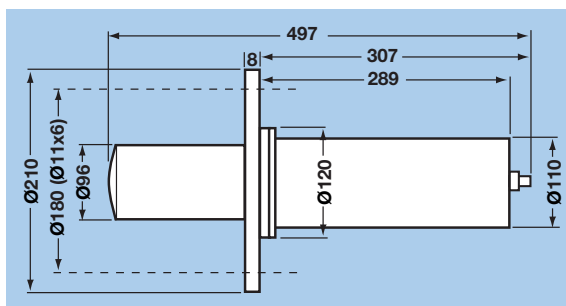
### Type 80 hours



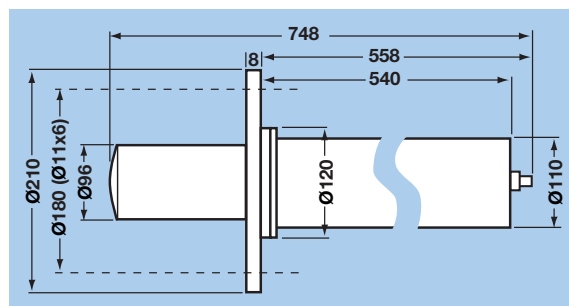
### Type 180 hours



### Type 260 hours



### Type 500 hours



### Transmitter

Type	Nominal width ND	inch	Number of operating hours	Weight in kg
80 hours	100 - 150	4" - 6"	80	0,6
180 hours	200 - 500	8" - 20"	180	2,2
260 hours	500 - 1600	20" - 64"	260	9,6
500 hours	500 - 1600	20" - 64"	500	14

### Receiver

Parameters	
Temperature range	-15 ... +70 °C
Signal	5 ... 15 m in the air
Weight	6,6 kg
Dimensions of case	400x370x175 mm





Important Questions on the Use of Pigs:	
1. The currently existing C factor or % efficiency loss compared to the ideal value:	
2. Type of medium in the pipe (water, oil, gas etc.)	
3. Pipe inner and outer diameters (changing inner diameters), transitions (sharp-edged or smooth)	
4. Dimension of: junctions, cross or T pieces, valves etc. (possibly attach pipe plan)	
5. Depth of a buried pipe	
6. Type of deposits e.g. limescale, mud, etc:	
7. Size of the deposits (probable minimum inner Ø)	
8. Length of the pipe to be cleaned	
9. Propellant envisaged	
10. Which pressure and conveying capacity are available for the cleaning operation	
11. Which maximum pressure is permitted for the pipe system?	
12. Entry and exit possibilities:	
13. Remarks or other details considered as important:	

Company \_\_\_\_\_

Point of contact \_\_\_\_\_

Street \_\_\_\_\_

City/town \_\_\_\_\_

Telephone \_\_\_\_\_

Fax \_\_\_\_\_

Email \_\_\_\_\_

# PSI Pigs

## Selection Guide



Types of pigs	PU-FP	PU-Plain	PU-Plain-S	PU-LR	PU-LR-S	PU-CC	PU-CC-S
<b>For the following applications:</b>							
Test run	X	X	X				
drying	X	X	X				
with slight contamination	X						
with medium contamination		X	X			X	X
with severe contamination				X	X		
elimination of humidity	X						
test pig for unknown contamination	X						
for long distances		X	X	X	X	X	X
dewatering		X	X			X	
with many fittings					X		X
with persistent deposits							
for the removal of corrosion							
filling and emptying pipes							
hydrostatic test				X		X	
for separating various media							
for paraffin or similar deposits							
calibration							
localisation (with transmitter + receiver)			X	X	X	X	X
for fitting reduction	X		X		X		X
for a pig compression of 50%	X						
for a pig compression of 20%			X				
for a pig compression of 15%		X					X
for a pig compression of 10%				X	X	X	
for a pig compression of 5%							
<b>For the following pipes:</b>							
steel							
cast iron	X	X	X	X	X	X	X
plastic	X	X	X	X	X	X	X
with inner lining							
<b>Suitability for pipe bends – designs:</b>							
3	X	X	X	X	X	X	X
5	X	X	X	X	X	X	X

(x) limited use





PU-AC	PU-TWB	PU-WB	Flex S3	Flex S4	Flex C2	Flex C3	Flex G2	Flex G3
			X					
				X				
X	X	X			X	X	X	X
X	X	X	X	X	X	X	X	X
X			X		X		X	
X	X	X			X	X	X	X
X	X	X			X	X		
			X	X				
			X	X				
			X	X				
							X	X
X	X	X	X	X	X	X	X	X
X			X	X	X	X	X	X
		X						
	X							
X	X	X			X	X	X	X
			X	X	(X)	(X)	X	X
			X	X	(X)	(X)	X	X
			X	X	(X)	(X)	X	X
X			X	X	X	X	X	X
X	X	X	X	X	X	X	X	X

**Disclaimer**

Please note, failure to select the correct materials or products we supply (“the Products”) may result in damage to plant, equipment or property. In some instances, it may cause death or personal injury. We are not designers and do not give advice about design related matters concerning the Products. We can help and assist with the technical specifications for the Products. In specific applications, particularly where critical conditions exist, we will try to assist you within the limitations of the services that we offer. All information supplied by us is intended as technical co-operation outlining the specifications of the different Products which we supply. To the extent permitted in law, no warranty is given in respect of any information supplied by us. The customer must satisfy themselves as to the suitability of the Products for their intended application and use. The correct fitting of Products is the responsibility of the customer. Your statutory rights remain unaffected. Save in respect of death, personal injury or fraud, our entire liability to you, however arising from the supply of Products shall be limited to the £10M indemnity amount provided by our insurers.